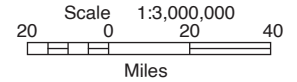
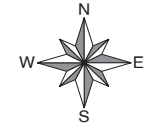


River Democracy Act - S.192

Proposed Wild & Scenic Rivers

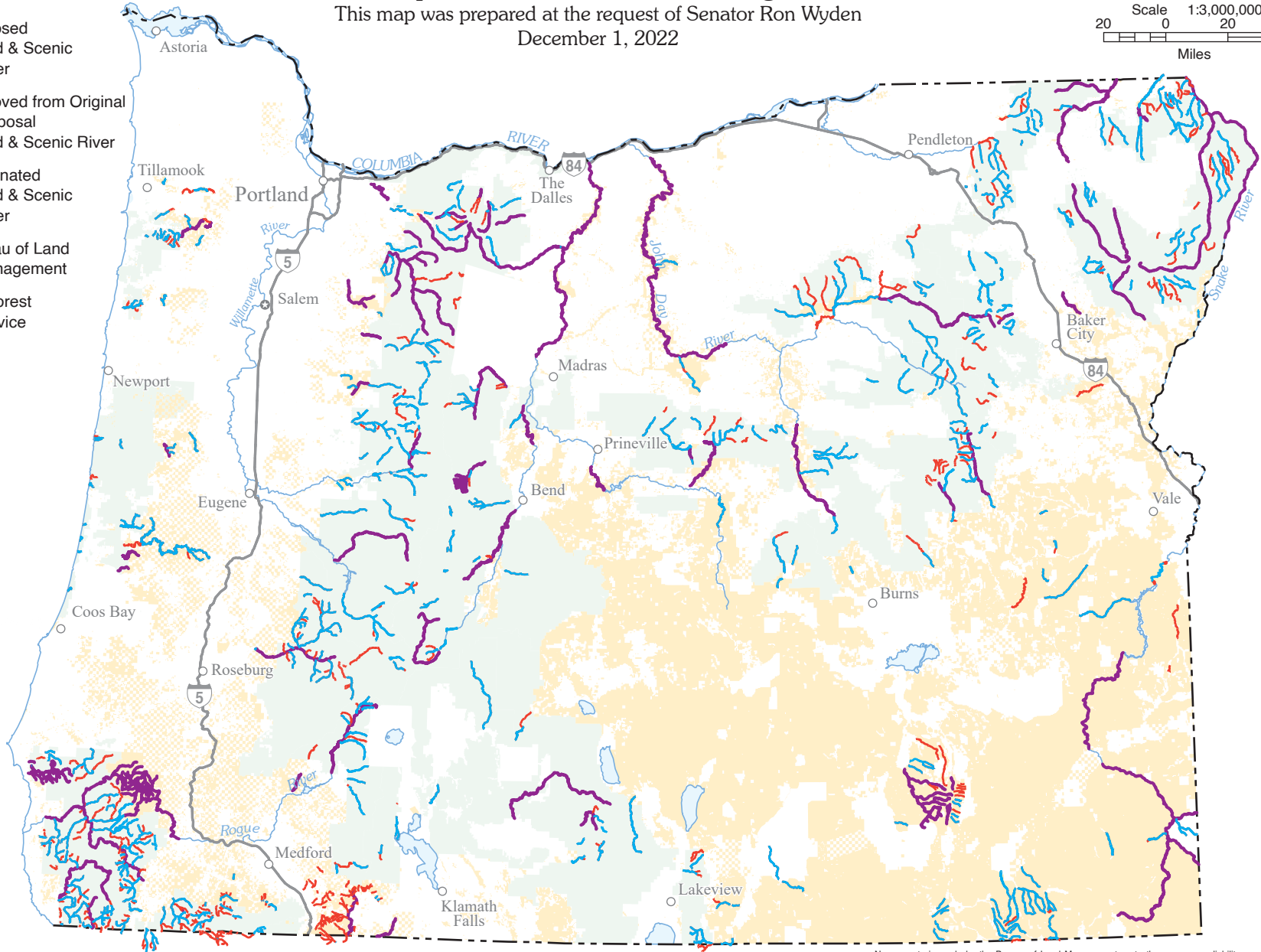
Proposed and Removed from Original

This map was prepared at the request of Senator Ron Wyden
December 1, 2022



LEGEND

- Proposed Wild & Scenic River
- Removed from Original Proposal Wild & Scenic River
- Designated Wild & Scenic River
- Bureau of Land Management
- US Forest Service

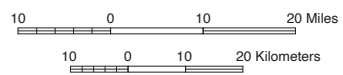
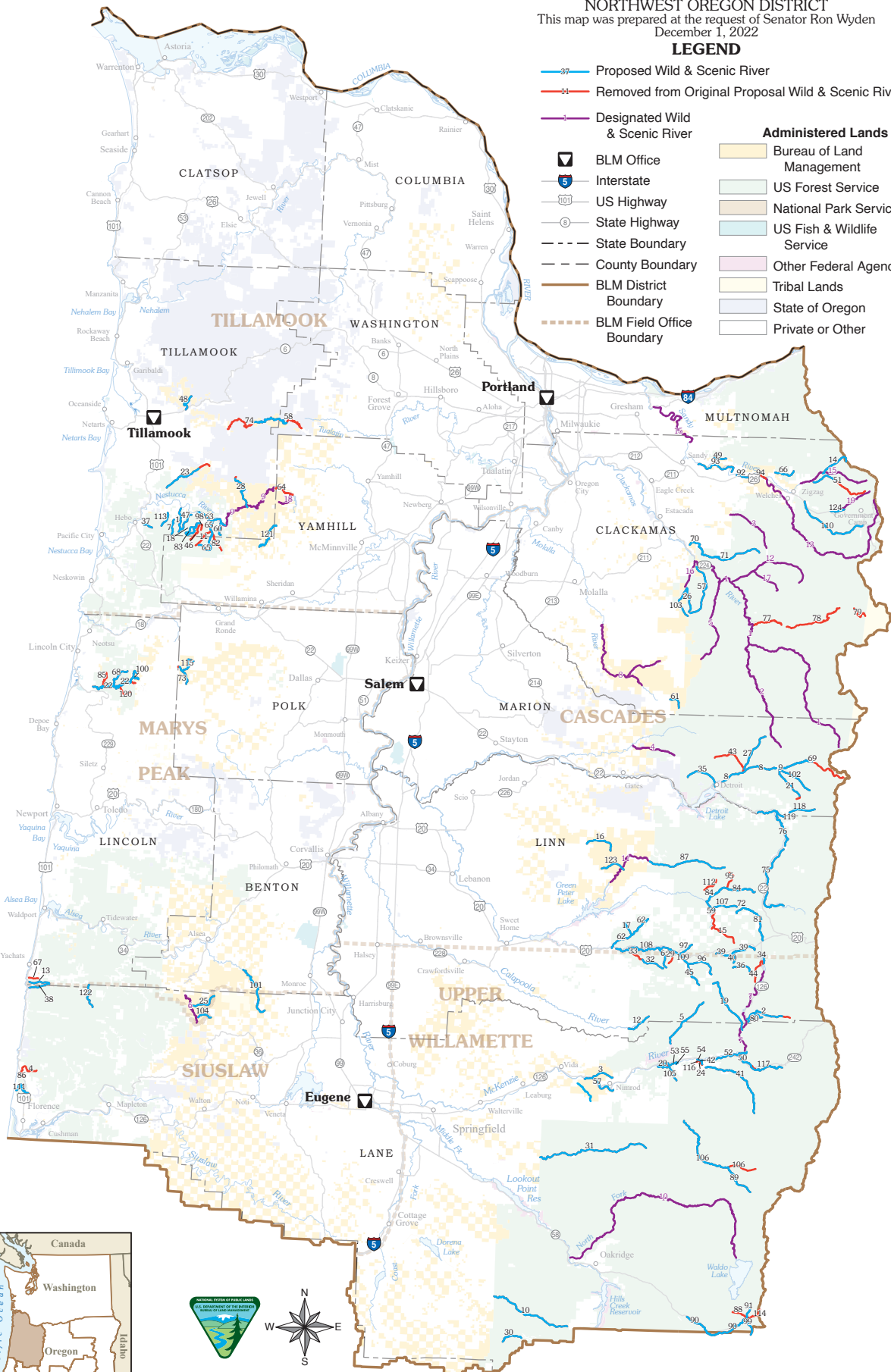


No warranty is made by the Bureau of Land Management as to the accuracy, reliability, or completeness of these data for individual or aggregate use with other data. Original data were compiled from various sources. This information may not meet National Map Accuracy Standards. This product was developed through digital means and may be updated without notification.

River Democracy Act - S.192
Proposed Wild & Scenic Rivers
Proposed and Removed from Original
NORTHWEST OREGON DISTRICT
 This map was prepared at the request of Senator Ron Wyden
 December 1, 2022

LEGEND

- 37 Proposed Wild & Scenic River
- 44 Removed from Original Proposal Wild & Scenic River
- Designated Wild & Scenic River
- BLM Office
- Interstate
- US Highway
- State Highway
- State Boundary
- County Boundary
- BLM District Boundary
- BLM Field Office Boundary
- Bureau of Land Management
- US Forest Service
- National Park Service
- US Fish & Wildlife Service
- Other Federal Agency
- Tribal Lands
- State of Oregon
- Private or Other



No warranty is made by the Bureau of Land Management as to the accuracy, reliability, or completeness of these data for individual or aggregate use with other data. Original data were compiled from various sources. This information may not meet National Map Accuracy Standards. This product was developed through digital means and may be updated without notification.

Existing Wild and Scenic River

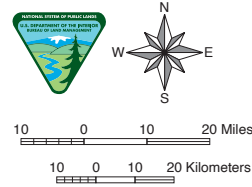
Map Number	Wild and Scenic River Name
1	Clackamas Wild and Scenic River
2	Collaas Wild and Scenic River
	Eagle Creek Mt ood Wild and Scenic River
	Elkorn Creek Wild and Scenic River
	Fis Creek Wild and Scenic River
	Lobster Creek Wild and Scenic River
	McKenie Wild and Scenic River
	Molalla Wild and Scenic River
9	Nestucca Wild and Scenic River
1	Nort Fork Middle Fork Willamette Wild and Scenic River
11	uartville Creek Wild and Scenic River
12	Roaring Wild and Scenic River
1	Salmon Wild and Scenic River
1	Sandy Wild and Scenic River
1	Sandy Wild and Scenic River
1	Sout Fork Clackamas Wild and Scenic River
1	Sout Fork Roaring Wild and Scenic River
1	Walker Creek Wild and Scenic River
19	ig ag Wild and Scenic River

Proposed Wild and Scenic River Revised and Removed From Original Proposal

Map Number	Wild and Scenic River Name	Map Number	Wild and Scenic River Name
1	Alder Creek	63	Nestucca River
2	Anderson Creek	64	Nestucca River - upper
3	Bear Creek	65	Niagara Creek
4	Berry Creek	66	North Boulder Creek
5	Blue River	67	North Cape Creek
6	Boulder Creek	68	North Creek
7	Boulder Creek	69	North Fork Breitenbush River
8	Breitenbush River	70	North Fork Clackamas River - lower
9	Breitenbush River	71	North Fork Clackamas River - upper
10	Brice Creek	72	North Fork Park Creek
11	Buelah Creek	73	North Fork Siletta River
12	Galapooia River	74	North Fork Trask River
13	Cape Creek	75	North Santiam River
14	Clear Fork Sandy River	76	North Santiam River
15	Cougar Creek	77	Oak Grove Fork Clackamas River, Lower
16	Crabtree Creek	78	Oak Grove Fork Clackamas River, Middle
17	Cub Creek	79	Oak Grove Fork Clackamas River, Upper
18	Dahl Fork Powder Creek	80	Olalie Creek
19	Deer Creek	81	Park Creek
20	Delta Creek	82	Pheasant Creek
21	Devil's Creek	83	Powder Creek
22	Drift Creek	84	Pyramid Creek
23	East Beaver Creek	85	Quarry Creek
24	East Fork Horse Creek	86	Quarry Creek
25	East Fork Lobster Creek	87	Quartzville Creek
26	East Fork South Fork Clackamas	88	Ray Creek
27	East Humbug Creek	89	Roaring River
28	Elk Creek	90	Salt Creek
29	Elk Creek	92	Sandy River
30	Fairview Creek	93	Sandy River
31	Fall Creek	94	Sandy River
32	Falls Creek	95	Scar Creek
33	Falls Creek	96	Sevenmile Creek
34	Fish Lake Creek	97	Sheep Creek
35	French Creek	98	Shueble Creek
36	Gate Creek	99	Skyline Creek
37	George Creek	100	Smith Creek
38	Gwynn Creek	101	South Fork Alsea River
39	Hackleman Creek	102	South Fork Breitenbush River
40	Heart Lake Creek	103	South Fork Clackamas River
41	Horse Creek	104	South Fork Lobster Creek
42	Horse Creek, lower	105	South Fork McKenzie River
43	Humbug Creek	106	South Fork McKenzie River
44	Ikenick Creek	107	South Pyramid Creek
45	Latiwi Creek	108	South Santiam River, Lower
46	Left Branch Powder Creek	109	South Santiam River, Upper
47	Limestone Creek	110	Still Creek
48	Little North Fork Wilson River	111	Sutton Creek
49	Little Sandy River	112	Swamp Creek
50	Lost Creek	113	Tony Creek
51	Lost Creek	114	Unnamed Tributary to Salt Creek
52	McKenzie River	115	Warmicke Creek
53	McKenzie River	116	West Fork Horse Creek
54	McKenzie River	117	White Branch
55	McKenzie River	118	Whitewater Creek
56	McKenzie River	119	Whitewater Creek
57	Memaloose Creek	120	Wildcat Creek
58	Middle Fork Nth Fik Trask Rvr	121	Willamina Creek
59	Middle Santiam River	122	Yachats River
60	Mina Creek	123	Yellowstone Creek
61	Mollala River	124	Zigzag River
62	Moose Creek		

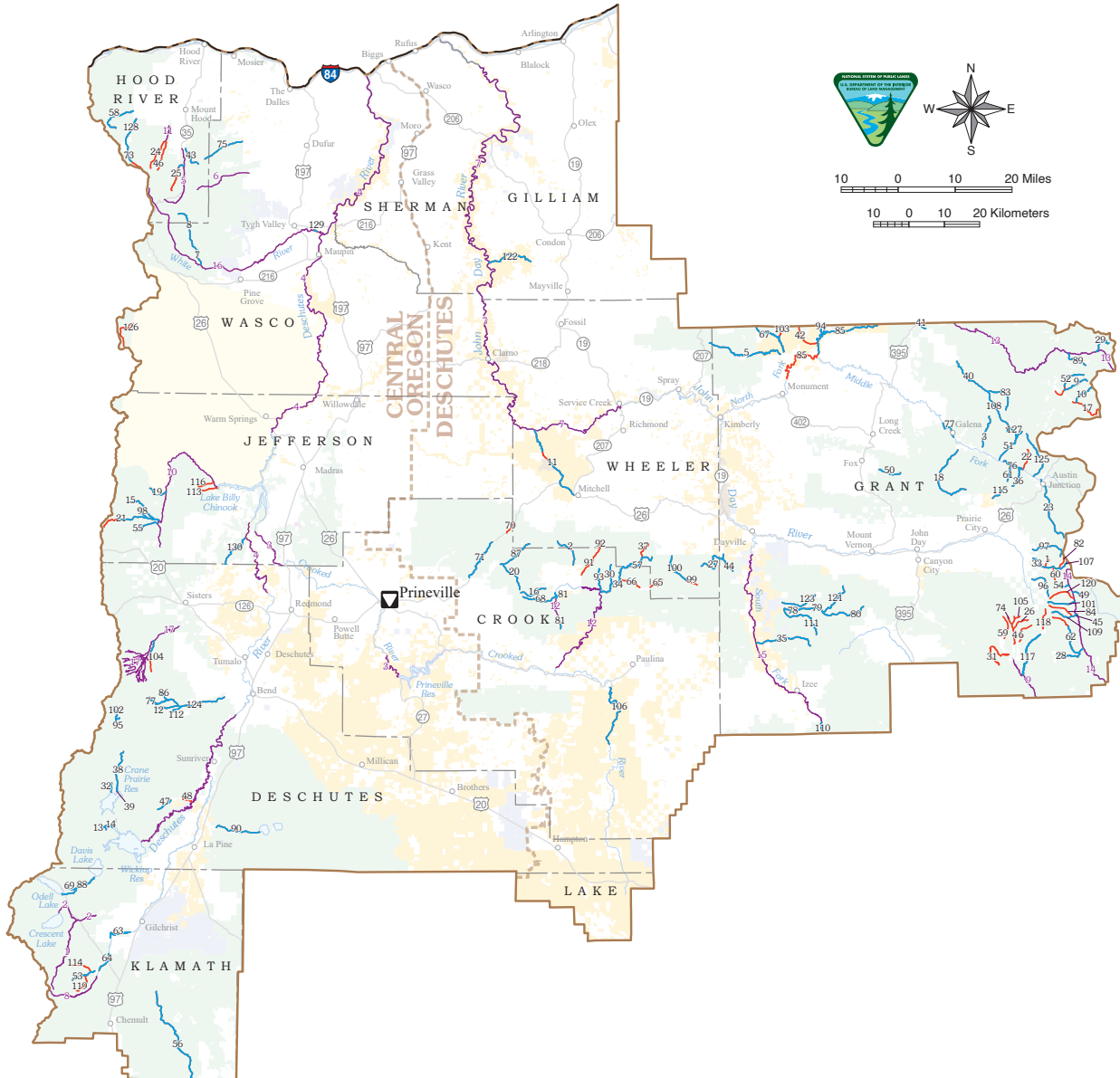
River Democracy Act - S.192
Proposed Wild & Scenic Rivers
Proposed and Removed from Original
PRINEVILLE DISTRICT

This map was prepared at the request of Senator Ron Wyden
 December 1, 2022



LEGEND

- Proposed Wild & Scenic River
 - Removed from Original Proposal Wild & Scenic River
 - Designated Wild & Scenic River
 - BLM Office
 - Interstate
 - US Highway
 - State Highway
 - State Boundary
 - County Boundary
 - BLM District Boundary
 - BLM Field Office Boundary
- Administered Lands**
- Bureau of Land Management
 - US Forest Service
 - National Park Service
 - Other Federal Agency
 - Tribal Lands
 - State of Oregon
 - Private or Other



No warranty is made by the Bureau of Land Management as to the accuracy, reliability, or completeness of these data for individual or aggregate use with other data. Original data were compiled from various sources. This information may not meet National Map Accuracy Standards. This product was developed through digital means and may be updated without notification.
 M21-02-01

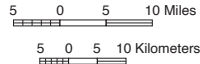
Existing Wild and Scenic River

Map Number	Wild and Scenic River Name
1	Big Marsh Creek Wild and Scenic River
2	Crescent Creek Wild and Scenic River
3	Crooked Wild and Scenic River
4	Deschutes Wild and Scenic River
5	East Fork Hood Wild and Scenic River
6	Fifteenmile Creek Wild and Scenic River
7	John Day Wild and Scenic River
8	Little Deschutes Wild and Scenic River
9	Malheur Wild and Scenic River
10	Metolius Wild and Scenic River
11	Middle Fork Hood Wild and Scenic River
12	North Fork Crooked Wild and Scenic River
13	North Fork John Day Wild and Scenic River
14	North Fork Malheur Wild and Scenic River
15	South Fork John Day Wild and Scenic River
16	White Wild and Scenic River
17	Whychus Creek Wild and Scenic River

Proposed Wild and Scenic River Revised and Removed From Original Proposal

Map Number	Wild and Scenic River Name	Map Number	Wild and Scenic River Name
1	Alder Gulch	66	Little Summit Creek
2	Allen Creek	67	Little Wall Creek
3	Big Boulder Creek	68	Lookout Creek
4	Big Creek	69	Maklaks Creek
5	Big Wall Creek	70	Marks Creek
6	Bosonberg Creek	71	Marks Creek
7	Boulder Creek	72	McCalpine Meadow Creek
8	Boulder Creek	73	McGee Creek
9	Boulder Creek	74	Meadow Fork Big Creek
10	Boundary Creek	75	Middle Fork Fivemile Creek
11	Bridge Creek	76	Middle Fork John Day River
12	Bridge Creek	77	Middle Fork Tumalo Creek
13	Browns Creek	78	Murderers Creek, Lower
14	Browns Creek	79	Murderers Creek, Middle
15	Bush Creek	80	Murderers Creek, Upper
16	Bush Creek	81	North Fork Crooked River
17	Bull Run Creek	82	North Fork Deardoff Creek
18	Camp Creek	83	North Fork Desolation Creek
19	Candle Creek	84	North Fork Elk Creek
20	Canyon Cr.	85	North Fork John Day River
21	Canyon Creek	86	North Fork Tumalo Creek
22	Caribou Creek	87	Ochoco Creek
23	Clear Creek	88	Odell Creek
24	Coe Branch	89	Onion Creek
25	Cold Springs Creek	90	Paulina Creek
26	Corral Basin Creek	91	Peterson Creek - Lower
27	Cottonwood Creek	92	Peterson Creek - Upper
28	Crane Creek	93	Porter Creek
29	Crawfish Creek	94	Potamus Creek
30	Crazy Creek	95	Quinn Creek
31	Crooked Creek	96	Rail Creek
32	Cultus River	97	Reynolds Creek
33	Deardoff Creek	98	Roaring Creek
34	Deep Creek	99	Rock Creek (Upper)
35	Deer Creek	100	Rock Creek (lower)
36	Dierhorn Creek	101	Sheep Creek
37	Derr Creek	102	Sink Creek
38	Deschutes River, Upper	103	Skookum Creek
39	Deschutes River, Upper	104	Snow Creek
40	Desolation Creek	105	Snowshoe Creek
41	Desolation Creek, lower	106	South Fork Crooked River
42	Ditch Creek	107	South Fork Deardoff Creek
43	Dog River	108	South Fork Desolation Creek
44	East Fork Cottonwood Creek	109	South Fork Elk Creek
45	Elk Creek	110	South Fork John Day River
46	Elliot Branch	111	South Fork Murderers Creek
47	Fall River	112	South Fork Tumalo Creek
48	Fall River	113	Spring Creek
49	Flat Creek	114	Spruce Creek
50	Fox Creek	115	Standard Creek
51	Granite Boulder Creek	116	Street Creek
52	Granite Creek	117	Summit Creek, Lower
53	Hemlock Creek	118	Summit Creek, Upper
54	Horseshoe Creek	119	Swamp Creek
55	Jack Creek	120	Swamp Creek
56	Jack Creek	121	Tex Creek
57	Jackson Creek	122	Thiurymile Creek
58	Lake Branch Fork Hood River	123	Thom Creek
59	Lake Creek	124	Tumalo Creek
60	Little Baldy Creek	125	Vinegar Creek
61	Little Butte Creek	126	Warm Springs River
62	Little Crane Creek	127	West Fork Granite Boulder Creek
63	Little Deschutes River, Lower	128	West Fork Hood River
64	Little Deschutes River, Middle	129	White River
65	Little Summit Creek	130	Whychus Creek

Additions: North Fork Crooked River



LEGEND

- Proposed Wild and Scenic River
- Removed from Original Wild & Scenic River
- Designated Wild & Scenic River
- BLM Office
- Interstate
- US Highway
- State Highway
- State Boundary
- County Boundary
- BLM District Boundary
- BLM Field Office Boundary

Administered Lands

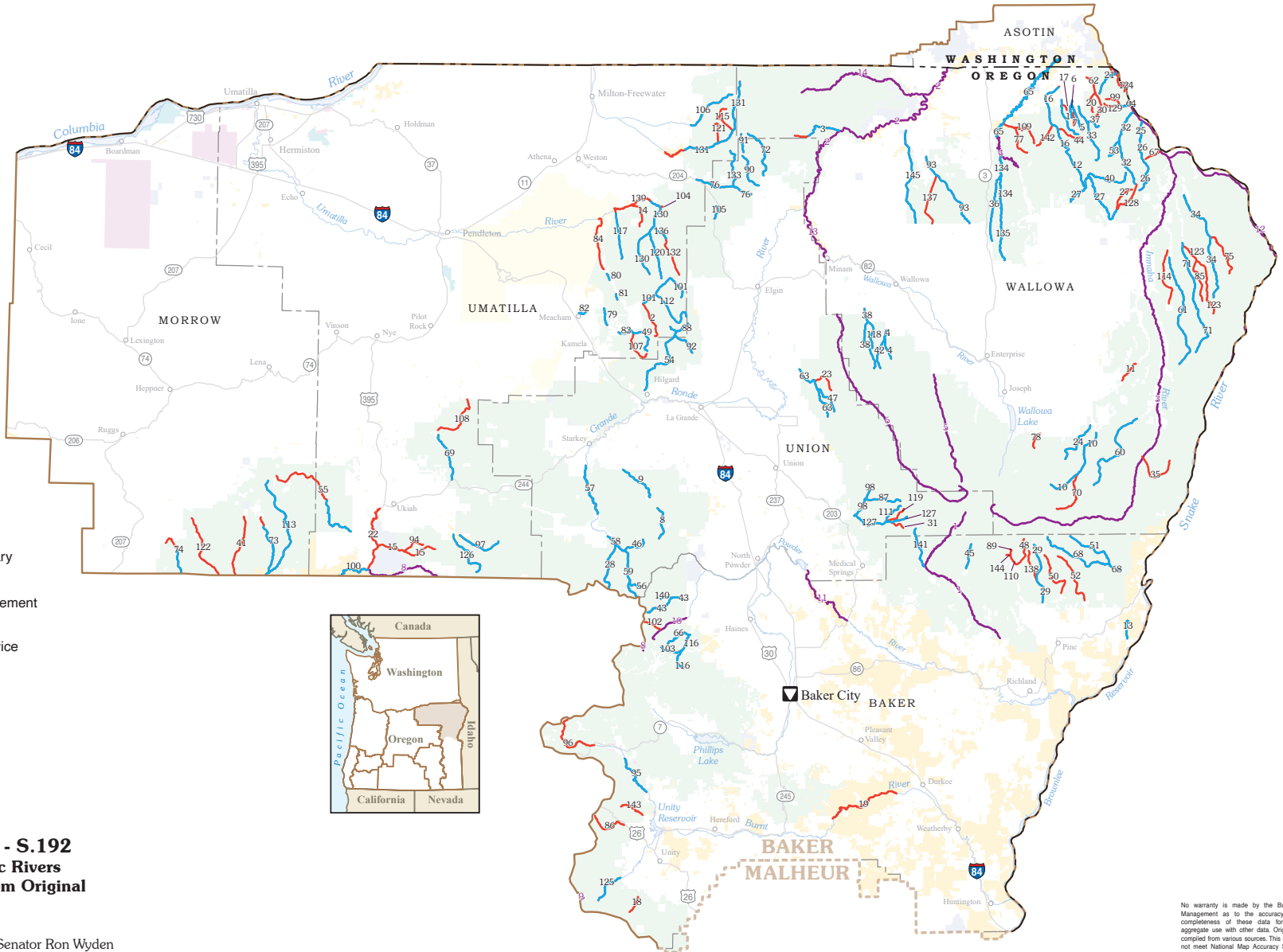
- Bureau of Land Management
- US Forest Service
- US Fish & Wildlife Service
- Other Federal Agency
- Tribal Lands
- State of Oregon
- Private or Other



River Democracy Act - S.192
Proposed Wild & Scenic Rivers
Proposed and Removed from Original

VALE DISTRICT
 Baker Field Office

This map was prepared at the request of Senator Ron Wyden
 December 1, 2022



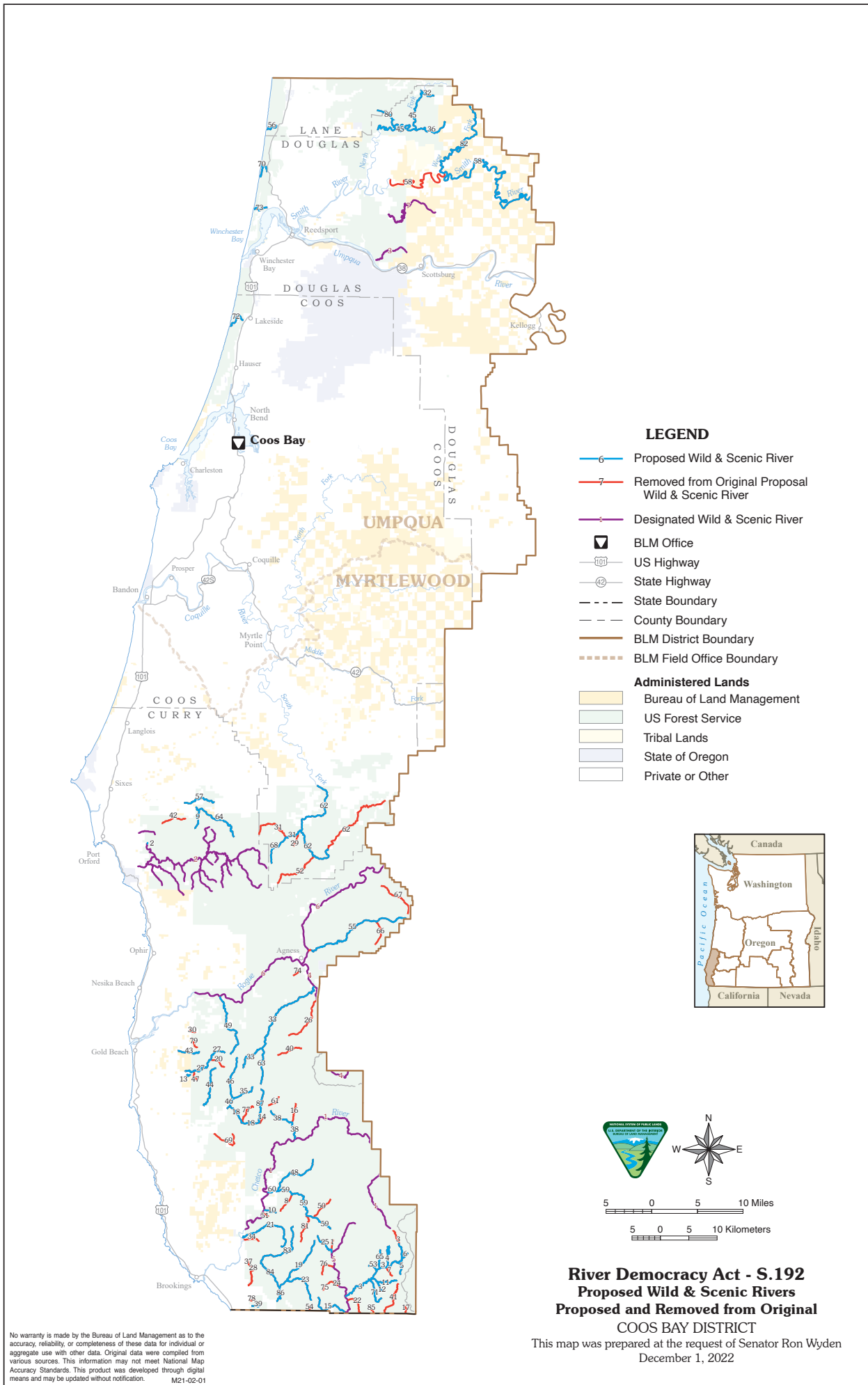
No warranty is made by the Bureau of Land Management as to the accuracy, reliability, or completeness of these data for individual or aggregate use with other data. Original data were compiled from various sources. This information may not meet National Map Accuracy Standards. This product was developed through digital means and may be updated without notification. M21-02-01

Existing Wild and Scenic River

Map Number	Wild and Scenic River Name
1	Eagle Creek (Wallowa-Whitman) Wild and Scenic River
2	Grande Ronde Wild and Scenic River
3	Imnaha Wild and Scenic River
4	Joseph Creek Wild and Scenic River
5	Lostine Wild and Scenic River
6	Minam Wild and Scenic River
7	North Fork John Day Wild and Scenic River
8	North Fork John Day Wild and Scenic River
9	North Fork Malheur Wild and Scenic River
10	North Powder Wild and Scenic River
11	Powder Wild and Scenic River
12	Snake Wild and Scenic River
13	Wallowa Wild and Scenic River
14	Wenaha Wild and Scenic River

Proposed Wild and Scenic River Revised and Removed From Original Proposal

Map Number	Wild and Scenic River Name	Map Number	Wild and Scenic River Name
1	Basin Creek	74	Little Wall Creek
2	Bear Creek	75	Long Prong
3	Bear Creek	76	Lookingglass Creek
4	Bear Creek	77	Lupine Creek
5	Bear Creek	78	McCully Creek
6	Bear Creek Tributary 1	79	Meacham Creek
7	Bear Creek Tributary 2	80	Meacham Creek
8	Beaver Creek	81	Meacham Creek
9	Beaver Creek	82	Meacham Creek
10	Big Sheep Creek	83	Meacham Creek
11	Big Sheep Creek	84	Meachem Creek
12	Billy Creek	85	Medicine Creek
13	Black Canyon	86	Middle Fork Burnt River
14	Bobsled Creek	87	Middle Fork Catherine Creek
15	Bridge Creek	88	Middle Fork Five Points Creek
16	Broady Creek	89	Middle Fork Pine Creek
17	Bushy Creek	90	Mottet Creek
18	Bullrun Creek	91	Mottet Creek
19	Burnt River	92	Mt Emily Creek
20	Cabin Creek	93	Mud Creek
21	Cache Creek	94	North Fork Bridge Creek
22	Camas Creek	95	North Fork Burnt River - Lower
23	Camp Creek	96	North Fork Burnt River - Upper
24	Carol Creek	97	North Fork Cable Creek
25	Cherry Creek, Lower	98	North Fork Catherine Creek
26	Cherry Creek, Upper	99	North Fork Jim Creek
27	Chesnimus Creek	100	North Fork John Day River
28	Clear Creek	101	North Fork Meacham Creek
29	Clear Creek	102	North Fork North Powder River
30	Cold Spring Creek	103	North Fork Rock Creek
31	Collins Creek	104	North Fork Umatilla River
32	Cook Creek	105	North Fork Umatilla River
33	Cottonwood Creek	106	North Fork Walla Walla River
34	Cow Creek	107	Owsley Creek
35	Crazyman Creek	108	Pearson Creek
36	Davis Creek	109	Pearvine Creek
37	Deadhorse Creek	110	Pine Creek
38	Deer Creek	111	Pole Creek
39	Desolation Creek, lower	112	Pot Creek
40	Devils Run Creek	113	Potamus Creek
41	Ditch Creek	114	Pumpkin Creek
42	Doc Creek	115	Reser Creek
43	Dutch Flat Creek	116	Rock Creek
44	East Fork Broady Creek	117	Ryan Creek
45	East Fork Eagle Creek	118	Sage Creek
46	East Fork Grande Ronde River	119	Sand Pass Creek
47	East Fork Indian Creek	120	Shimmiehorn Creek
48	East Fork Pine Creek	121	Skiphorton Creek
49	East Meacham Creek	122	Skookum Creek
50	East Pine Creek	123	Sleepy Creek
51	Elk Creek	124	Snake River
52	Fish Creek	125	South Fork Burnt River
53	Five Points Creek	126	South Fork Cable Creek
54	Five Points Creek	127	South Fork Catherine Creek
55	Fivermile Creek	128	South Fork Chesnimus Creek
56	Grande Ronde Lake Creek	129	South Fork Jim Creek
57	Grande Ronde River - Lower Upper	130	South Fork Umatilla River
58	Grande Ronde River - Middle Upper	131	South Fork Walla Walla River
59	Grande Ronde River - upper upper	132	Spring Creek
60	Grouse Creek	133	Summer Creek
61	Horse Creek	134	Swamp Creek, Lower
62	Horse Creek	135	Swamp Creek, Middle
63	Indian Creek	136	Thomas Creek
64	Jim Creek	137	Tope Creek
65	Joseph Creek	138	Trail Creek
66	Killamacue Creek	139	Umatilla River
67	Knight Creek	140	Van Patten Creek
68	Lake Fork Creek	141	West Eagle Creek
69	Lane Creek	142	West Fork Broady Creek
70	Lick Creek	143	West Fork Burnt River
71	Lightning Creek	144	West Fork Pine Creek
72	Little Lookingglass Creek	145	Wildcat Creek
73	Little Potamus Creek		



No warranty is made by the Bureau of Land Management as to the accuracy, reliability, or completeness of these data for individual or aggregate use with other data. Original data were compiled from various sources. This information may not meet National Map Accuracy Standards. This product was developed through digital means and may be updated without notification. M21-02-01

Existing Wild and Scenic River

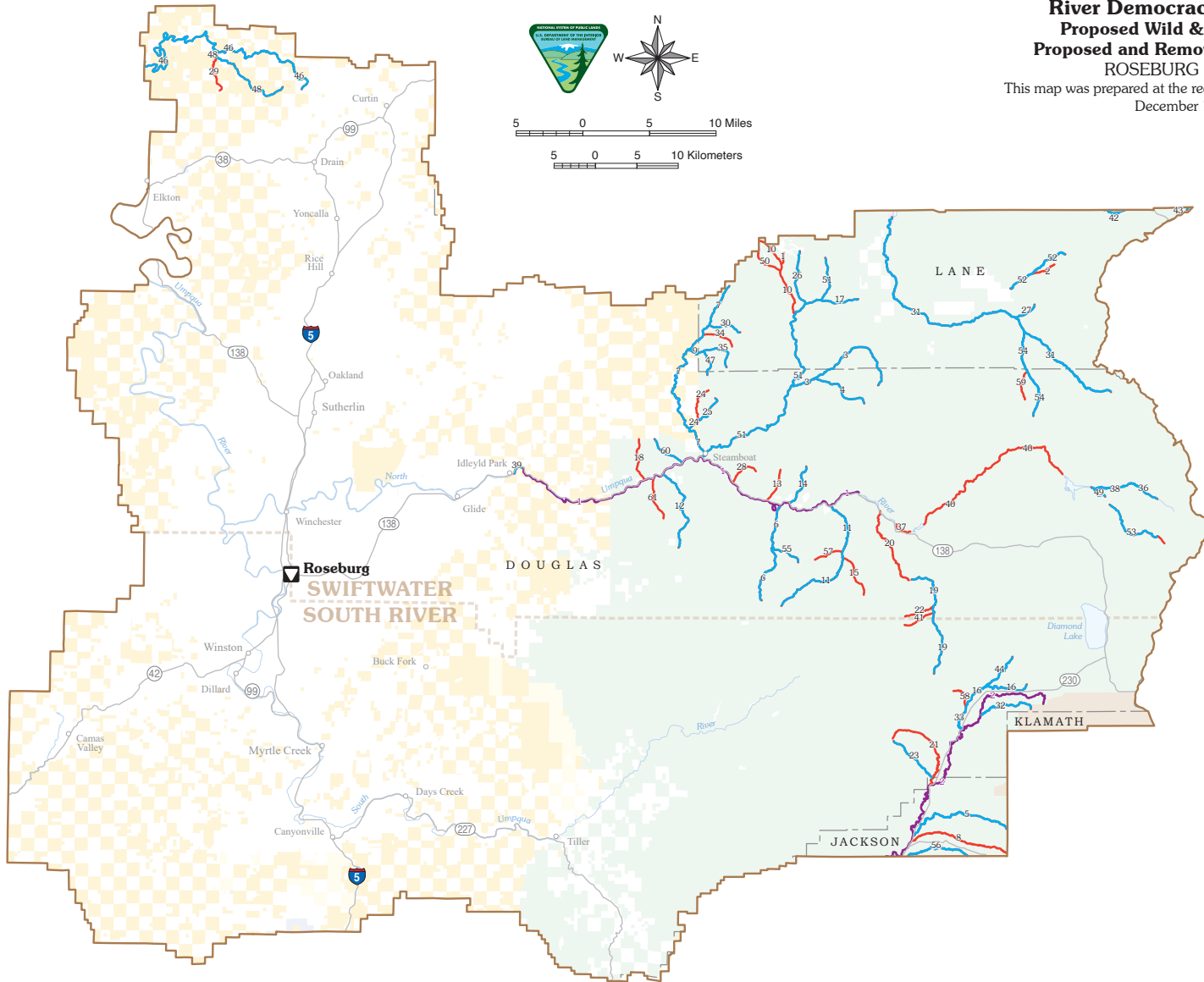
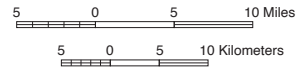
Map Number	Wild and Scenic River Name
1	Chetco Wild and Scenic River
2	Elk Wild and Scenic River
3	Franklin Creek Wild and Scenic River
4	Illinois Wild and Scenic River
5	North Fork Smith Wild and Scenic River
6	Rogue Wild and Scenic River
7	Wasson Wild and Scenic River

Proposed Wild and Scenic River Revised and Removed From Original Proposal

Map Number	Wild and Scenic River Name
1	Acorn Creek
2	Anvil Creek
3	Baldface Creek
4	Baldface Creek Trib 3
5	Baldface Creek Trib 4
6	Baldface Creek Trib 5
7	Baldface Creek Unnamed Trib 2
8	Basin Creek
9	Bee Creek
10	Big Redwood Creek
11	Biscuit Creek
12	Biscuit Creek Tributary
13	Boj Creek
14	Cedar Creek
15	Cedar Creek
16	Craggle Creek
17	Diamond Creek
18	East Fork Pistol River
19	East Fork Winchuck River
20	Elko Creek
21	Emily Creek
22	Fall Creek
23	Fourth of July Creek
24	Hardtack Creek
25	Horse Creek
26	Horse Sign Creek
27	Hunter Creek
28	Jack Creek
29	Jim Hayes Creek
30	Jim Hunt Creek
31	Johnson Creek
32	Kentucky Creek
33	Lawson Creek
34	Little Emily Creek
35	Meadow Creek
36	Middle Fork North Fork Smith River
37	Mill Creek
38	Mislatnah Creek
39	Moser Creek
40	North Fork Collier Creek
41	North Fork Diamond Creek
42	North Fork Dry Creek
43	North Fork Hunter Creek
44	North Fork Pistol River
45	North Fork Smith River
46	Pistol River
47	Pyramid Rock Creek
48	Quail Prairie Creek
49	Quosatana Creek
50	Red Mountain Creek
51	Redwood Creek
52	Rock Creek
53	Rock Creek
54	Rowdy Creek
55	Shasta Costa Creek
56	Silicos River
57	Sixes River
58	Smith River
59	South Fork Chetco River
60	South Fork Chetco River - Lower
61	South Fork Collier Creek
62	South Fork Coquille River
63	South Fork Lawson Creek
64	South Fork Sixes River
65	Spokane Creek
66	Squirrel Camp Creek
67	Stair Creek
68	Sucker Creek
69	Sunrise Creek
70	Takenitch Creek
71	Taylor Creek
72	Tenmile Creek
73	Threemile Creek
74	Tom Fry Creek
75	Unnamed
76	Unnamed
77	Unnamed Panter Lake Creek
78	Unnamed Winchuck River Tributary
79	Unnamed Trib to Jim Hunt Creek
80	West Branch North Fork Smith River
81	West Coon Creek
82	West Fork Smith River
83	Wheeler Creek
84	Wheeler Creek
85	Wimer Creek
86	Winchuck River
87	Windy Creek

River Democracy Act - S.192
Proposed Wild & Scenic Rivers
Proposed and Removed from Original
ROSEBURG DISTRICT

This map was prepared at the request of Senator Ron Wyden
 December 1, 2022



LEGEND

- Proposed Wild & Scenic River
- Removed from Original Proposal Wild & Scenic River
- Designated Wild & Scenic River
- BLM Office
- Interstate
- State Highway
- County Boundary
- BLM District Boundary
- BLM Field Office Boundary
- Administered Lands**
- Bureau of Land Management
- US Forest Service
- National Park Service
- Other Federal Agency
- Tribal Lands
- State of Oregon
- Private or Other

No warranty is made by the Bureau of Land Management as to the accuracy, reliability, or completeness of these data for individual or aggregate use with other data. Original data were compiled from various sources. This information may not meet National Map Accuracy Standards. This product was developed through digital means and may be updated without notification.

**Existing
Wild and Scenic River**

Map Number	Wild and Scenic River Name
1	North Umpqua Wild and Scenic River
2	Rogue Wild and Scenic River

**Proposed Wild and Scenic River
Revised and
Removed From Original Proposal**

Map Number	Wild and Scenic River Name
1	Annie Creek
2	Bear Creek
3	Big Bend Creek
4	Bulldog Creek
5	Bybee Creek
6	Call Creek
7	Canton Creek
8	Castle Creek
9	Chilcoot Creek
10	City Creek
11	Copeland Creek
12	Cougar Creek
13	Dog Creek
14	Dry Creek
15	East Fork Copeland Creek
16	East Fork Muir Creek
17	East Fork Steamboat Creek
18	Fairview Creek
19	Fish Creek
20	Fish Creek
21	Foster Creek
22	Grave Creek
23	Hershberger Creek
24	Hipower Creek
25	Hipower Creek Tributary
26	Horse Heaven Creek
27	Indigo Creek
28	Jack Creek
29	Little South Fork Smith River
30	McKinley Creek
31	Middle Fork Willamette River
32	Minnehaha Creek
33	Muir Creek
34	No Man Creek
35	North Fork Chilcoot Creek
36	North Umpqua
37	North Umpqua River
38	North Umpqua River
39	North Umpqua River
40	North Umpqua River
41	Pine Creek
42	Salt Creek
43	Salt Creek
44	Shenwood Creek
45	Skyline Creek
46	Smith River
47	South Fork Chilcoot Creek
48	South Fork Smith River
49	Spring River
50	St Peter Creek
51	Steamboat Creek
52	Swift Creek
53	Thirsty Creek
54	Tumblebug Creek
55	Twin Lake Creek
56	Union Creek
57	West Fork Copeland Creek
58	West Fork Muir Creek
59	West Fork Tumblebug Creek
60	Williams Creek
61	Wright Creek

River Democracy Act - S.192
Proposed Wild & Scenic Rivers
Proposed and Removed from Original
MEDFORD DISTRICT

This map was prepared at the request of Senator Ron Wyden
 December 1, 2022

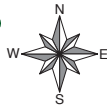


LEGEND

- 73 Proposed Wild & Scenic River
- 124 Removed from Original Proposal Wild & Scenic River
- 5 Designated Wild & Scenic River
- BLM Office
- Interstate
- US Highway
- State Highway
- State Boundary
- County Boundary
- BLM District Boundary
- BLM Field Office Boundary

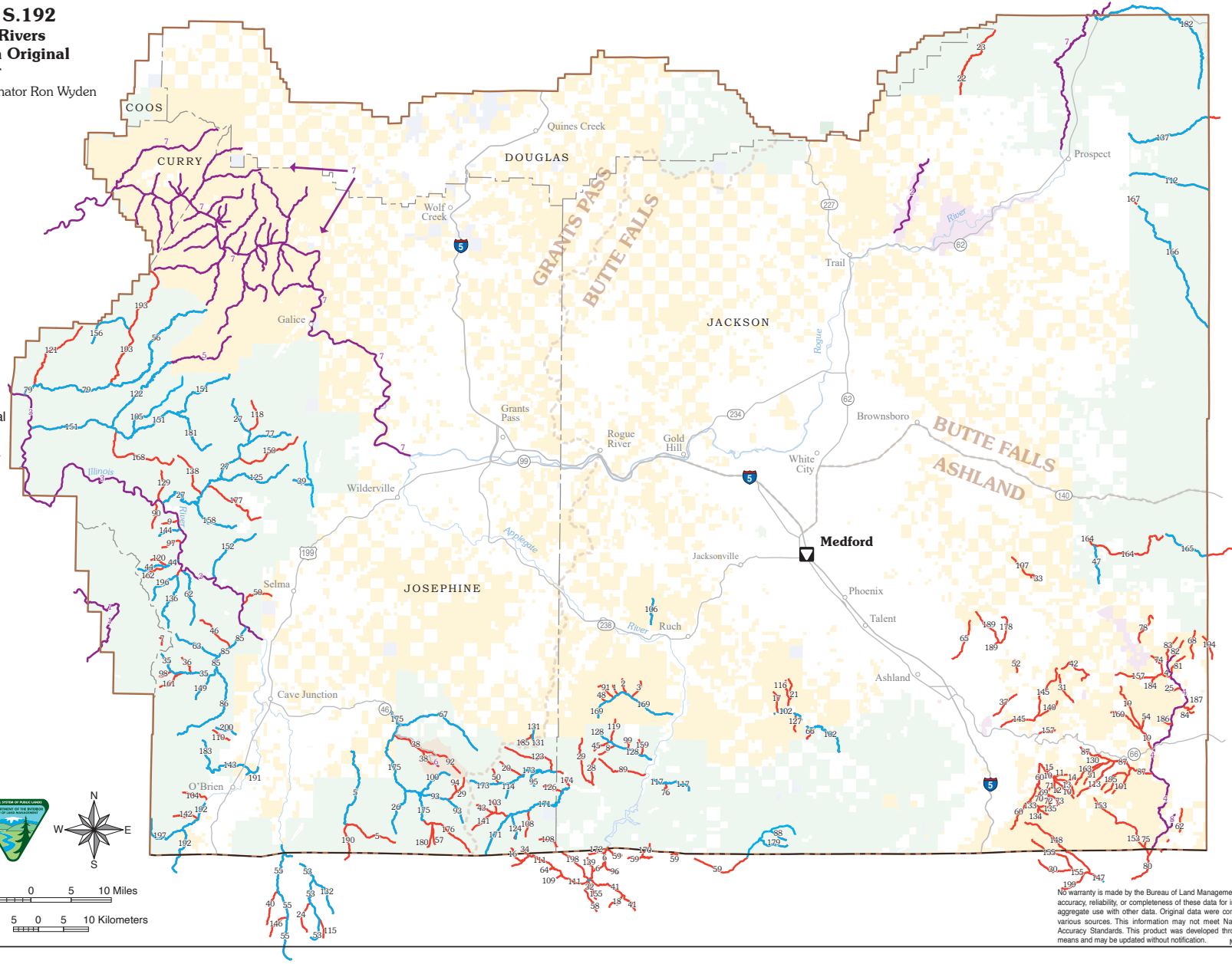
Administered Lands

- Bureau of Land Management
- US Forest Service
- National Park Service
- Other Federal Agency
- State of Oregon
- Private or Other



5 0 5 10 Miles

5 0 5 10 Kilometers



No warranty is made by the Bureau of Land Management as to the accuracy, reliability, or completeness of these data for individual or aggregate use with other data. Original data were compiled from various sources. This information may not meet National Map Accuracy Standards. This product was developed through digital means and may be updated without notification. M21-02-01

Existing Wild and Scenic River

Map Number	Wild and Scenic River Name
1	Chetco Wild and Scenic River
2	Elk Creek Wild and Scenic River
3	Illinois Wild and Scenic River
4	Jenny Creek Wild and Scenic River
5	North Fork Silver Creek Wild and Scenic River
6	River Syc Wild and Scenic River
7	Rogue Wild and Scenic River
8	Spring Creek Wild and Scenic River

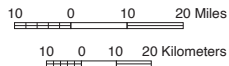
Proposed Wild and Scenic River Revised and Removed From Original Proposal

Map Number	Wild and Scenic River Name	Map Number	Wild and Scenic River Name	Map Number	Wild and Scenic River Name
1	1916 Gulch	76	Hole in the Ground Creek	151	Silver Creek
2	1917 Gulch	77	Horse Creek	152	Snowline Creek
3	1918 Gulch	78	Hoxic Creek	153	Stookum Creek
4	Alternative Mainstem Jenny Creek	79	Indigo Creek	154	Slide Creek
5	Althouse Creek	80	Jenny Creek	155	Slide Creek
6	Applegate River	81	Jenny Creek Headwaters East Fork	156	Snail Creek
7	Babyfoot Creek	82	Jenny Creek Headwaters Mainstem Central	157	Soda Creek
8	Bailey Gulch	83	Jenny Creek Headwaters West Fork	158	Soldier Creek
9	Baker Creek	84	Johnson Creek	159	Sourdough Gulch
10	Baldy Creek	85	Josephine Creek, Lower	160	South Fork Beaver Creek
11	Baldy Creek Headwaters 1	86	Josephine Creek, Upper	161	South Fork Canyon Creek
12	Baldy Creek Headwaters 2	87	Keene Creek	162	South Fork Dailey Creek
13	Baldy Creek Headwaters 3	88	Kettle Creek	163	South Fork Keene Creek
14	Baldy Creek Headwaters 4	89	Kinney Creek	164	South Fork Little Butte Creek - lower
15	Baldy Creek Headwaters 5	90	Labrador Creek	165	South Fork Little Butte Creek - upper
16	Bean Gulch	91	Ladybug Gulch	166	South Fork Rogue River
17	Bear Gulch	92	Lake Creek	167	South Fork Rogue River (Middle)
18	Bear Gulch/Cook and Green Creek	93	Left Fork Sucker Creek	168	South Fork Silver Creek
19	Beaver Creek	94	Left Hand Fork Brush Creek	169	Star Gulch
20	Bigelow Creek	95	Lewis Creek	170	Stein Gulch
21	Birch Creek	96	Lick Gulch	171	Steve Fork Carberry Creek
22	Bitter Lick Creek	97	Lightning Creek	172	Striddin Gulch
23	Bitter Lick Creek	98	Lightning Gulch	173	Stungs Fork Carberry Creek
24	Black Creek	99	Lime Gulch	174	Sucker Creek, Middle
25	Bluejay Creek	100	Limestone Creek	175	Sucker Creek, Upper
26	Bolan Creek	101	Lincoln Creek	176	Suede Creek
27	Briggs Creek	102	Little Applegate River	177	Sweethouse Canyon Creek
28	Broadenaxe Creek	103	Little Craggy Creek	178	Tamarack Creek
29	Brush Creek	104	Little Rock Creek	179	Tannen Creek
30	Brushy Gulch	105	Little Silver Creek	180	Todd Creek
31	Bumt Creek	106	Long Gulch	181	Union Creek
32	Butte Fork Applegate River	107	Lost Creek	182	No Name Creek
33	Bybee Gulch	108	Low Gap Creek	183	Unnamed Fork of Soda Creek
34	Camp Gulch	109	Marble Gulch	184	Unnamed Fork of the Pipe Fork
35	Canyon Creek	110	Mendenhall Creek	185	Unnamed Trib of Jenny Creek
36	Carpenter Gulch	111	Middle Fork Applegate River	186	Unnamed Tributary to Johnson Creek
37	Cattle Creek	112	Middle Fork Rogue River	187	Upper Cave Creek
38	Cave Creek	113	Mill Creek	188	Walker Creek
39	Cedar Log Creek	114	Miller Lake Creek	189	West Fork Althouse Creek
40	Chicago Creek	115	Mud Lake Creek	190	West Fork Illinois River, Middle
41	Cook and Green Creek	116	Muddy Gulch	191	West Fork Illinois River, Upper
42	Cottonwood Creek	117	Mule Creek	192	West Fork Indigo Creek
43	Craggy Creek	118	Myers Creek	193	West Fork Johnson Creek Unnamed Trib 1
44	Dailey Creek	119	Nine Dollar Gulch	194	West Fork Lincoln Creek
45	Dark Canyon Creek	120	North Fork Dailey Creek	195	West Fork Rancherie Creek
46	Days Gulch	121	North Fork Indigo Creek	196	Whiskey Creek
47	Dead Indian Creek	122	North Fork Silver Creek	197	Whisky Creek
48	Deadman Gulch	123	O'Brien Creek	198	Wildcat Gulch
49	Deer Creek	124	O'Connell Creek	199	Woodcock Creek
50	Deer Creek	125	Onion Creek		
51	Devil's Gulch	126	Osier Creek		
52	Dosier Flat Fork of Cove Creek	127	Owl Gulch		
53	Dunn Creek	128	Palmer Creek		
54	East Fork Beaver Creek	129	Panther Creek		
55	East Fork Illinois River	130	Parsnip Creek		
56	East Fork Indigo Creek	131	Pipe Fork		
57	East Tannen Creek	132	Poker Creek		
58	Echo Canyon	133	Porcupine Creek		
59	Elliott Creek	134	Porcupine Creek Headwaters 1		
60	Emigrant Creek	135	Porcupine Creek Headwaters 2		
61	Fall Creek	136	Rancherie Creek		
62	Fall Creek	137	Red Blanket Creek		
63	Fiddler Gulch	138	Red Dog Creek		
64	French Gulch	139	Reservoir Gulch		
65	Gawley Creek	140	Right Fork Sampson Creek		
66	Glade Creek	141	Right Hand Fork Steve Fork		
67	Grayback Creek	142	Rock Creek		
68	Green Creek	143	Rough & Ready Creek		
69	Green Mountain Creek	144	Salmon Creek		
70	Green Mountain Creek Headwaters 1	145	Sampson Creek		
71	Green Mountain Creek Headwaters 2	146	Sanger Canyon		
72	Green Mountain Creek Headwaters 3	147	Scotch Creek, Lower		
73	Green Mountain Creek Headwaters 4	148	Scotch Creek, Upper		
74	Grizzly Creek	149	Sebastopol Creek		
75	Hartwell Draw	150	Secret Creek		

River Democracy Act - S.192
Proposed Wild & Scenic Rivers
Proposed and Removed from Original

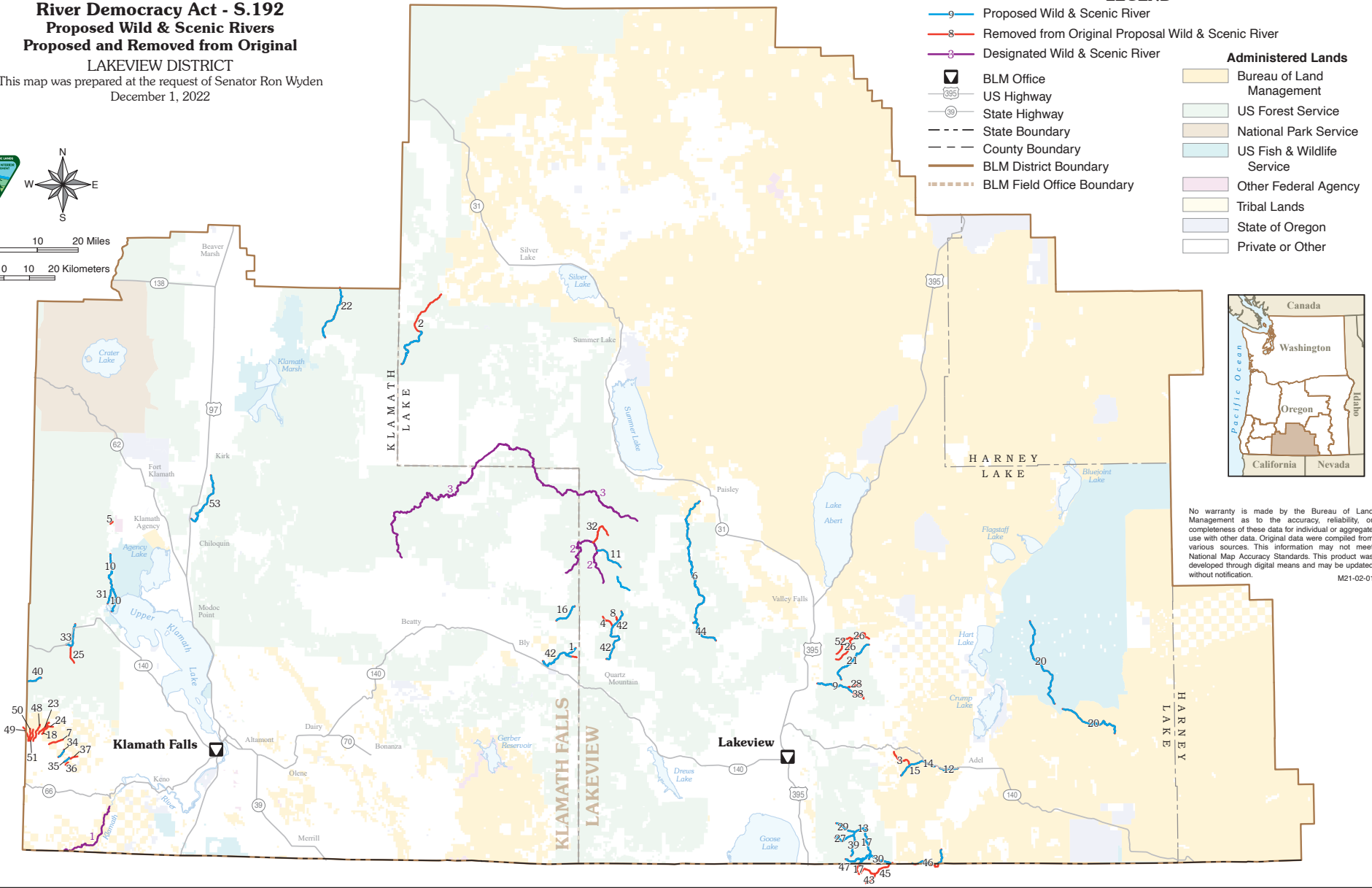
LAKEVIEW DISTRICT

This map was prepared at the request of Senator Ron Wyden
 December 1, 2022



LEGEND

- 9 Proposed Wild & Scenic River
 - 8 Removed from Original Proposal Wild & Scenic River
 - 3 Designated Wild & Scenic River
 - BLM Office
 - US Highway
 - State Highway
 - State Boundary
 - County Boundary
 - BLM District Boundary
 - BLM Field Office Boundary
- Administered Lands**
- Bureau of Land Management
 - US Forest Service
 - National Park Service
 - US Fish & Wildlife Service
 - Other Federal Agency
 - Tribal Lands
 - State of Oregon
 - Private or Other



No warranty is made by the Bureau of Land Management as to the accuracy, reliability, or completeness of these data for individual or aggregate use with other data. Original data were compiled from various sources. This information may not meet National Map Accuracy Standards. This product was developed through digital means and may be updated without notification.

M21-02-01

Existing Wild and Scenic River

Map Number	Wild and Scenic River Name
1	Klamath Wild and Scenic River
2	North Fork Sprague Wild and Scenic River
3	Sycan Wild and Scenic River

Proposed Wild and Scenic River Revised and Removed From Original Proposal

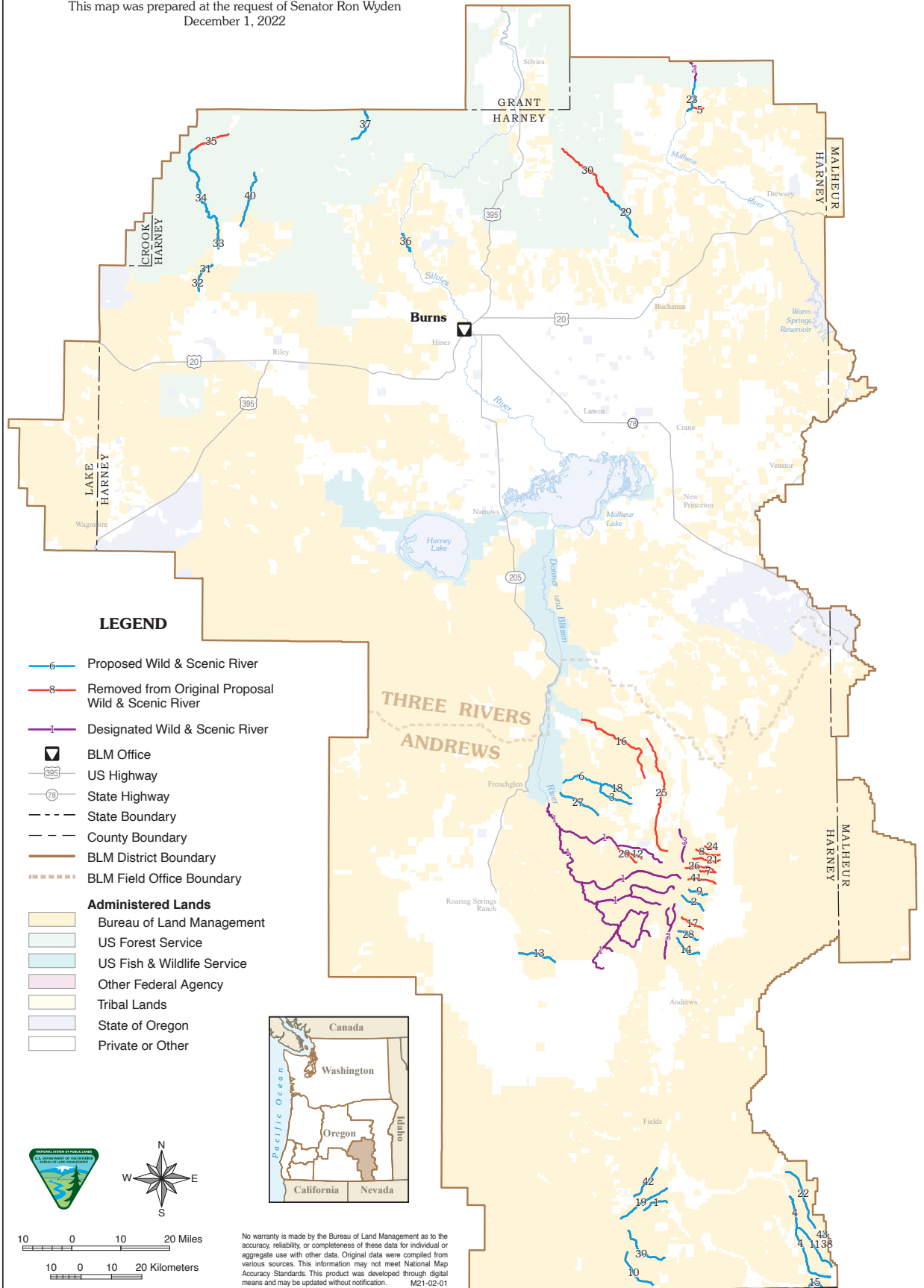
Map Number	Wild and Scenic River Name
1	Brownsworth Creek
2	Buck Creek
3	Camas Creek
4	Camp Creek
5	Cherry Creek
6	Chewaucan River
7	Cold Creek
8	Conal Creek
9	Crooked Creek
10	Crystal Creek
11	Dead Cow Creek
12	Deep Creek
13	Deep Creek (Upper)
14	Deep Creek - Middle Middle Mainstem
15	Deep Creek - Upper Middle Mainstem
16	Deming Creek
17	Dismal Creek
18	East Fork Johnson Creek
19	Guano Creek
20	Guano Creek
21	Honey Creek
22	Jack Creek
23	Johnson Creek
24	Johnson Creek
25	Klamath Mountain Lakes Fork
26	Little Honey Creek
27	Middle Fork Deep Creek
28	North Fork Crooked Creek
29	North Fork Deep Creek
30	North Fork Twelvemile Creek
31	Recreation Creek
32	School Creek
33	Seldom Creek
34	Sheepy Creek Headwaters Fork 1
35	Sheepy Creek Headwaters Fork 2
36	Sheepy Creek Headwaters Fork 3
37	Sheepy Creek Headwaters Fork 4
38	South Fork Crooked Creek
39	South Fork Deep Creek
40	South Fork Little Butte Creek - Upper
41	South Fork Sprague River
42	South Fork Sprague River
43	South Fork Twelvemile Creek
44	Swamp Creek
45	Twelvemile Creek
46	Twelvemile Creek, Middle
47	West Fork Dismal Creek
48	West Fork Johnson Creek
49	West Fork Johnson Creek Unnamed Trib 1
50	West Fork Johnson Creek Unnamed Trib 2
51	West Fork Johnson Creek Unnamed Trib 3
52	White Pine Marsh Creek
53	Williamson River

Additions: Dead Horse Creek

**River Democracy Act - S.192
Proposed Wild & Scenic Rivers
Proposed and Removed from Original**

BURNS DISTRICT

This map was prepared at the request of Senator Ron Wyden
December 1, 2022



No warranty is made by the Bureau of Land Management as to the accuracy, reliability, or completeness of these data for individual or aggregate use with other data. Original data were compiled from various sources. This information may not meet National Map Accuracy Standards. This product was developed through digital means and may be updated without notification. M21-02-01

Existing Wild and Scenic River

Map Number	Wild and Scenic River Name
1	Danner und Blitzen Wild and Scenic River
2	Malheur Wild and Scenic River
3	Wildhorse and Kinger Creeks Wild and Scenic River

Proposed Wild and Scenic River **Revised** and **Removed From Original Proposal**














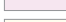
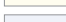


Map Number	Wild and Scenic River Name
1	Arizona Creek
2	Big Alvord Creek
3	Big Bridge Creek
4	Big Trout Creek
5	Bluebucket Creek
6	Bridge Creek
7	Buena Vista Creek
8	Castle Rock Creek
9	Cottonwood Creek
10	Denio Creek
11	East Fork Big Trout Creek
12	Grove Creek
13	Home Creek
14	Indian Creek
15	Kings River
16	Kumbo Creek
17	Little Alvord Creek
18	Little Bridge Creek
19	Little Cottonwood Creek
20	Little Fish Creek
21	Little McCoy Creek
22	Little Trout Creek
23	Malheur River, Lower
24	Mann Creek
25	McCoy Creek
26	Mosquito Creek
27	Mud Creek
28	Pike Creek
29	Pine Creek - lower
30	Pine Creek - upper
31	Silver Creek (lower)
32	Silver Creek (lowest)
33	Silver Creek, Middle
34	Silver Creek, Upper
35	Silver Creek, Uppermost
36	Silvies River
37	South Fork John Day River
38	Unnamed Tributary Little Whitehorse
39	Van Horn Creek
40	Wicklup Creek
41	Willow Creek
42	Willow Creek
43	Willow Creek, (upper)

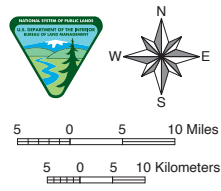
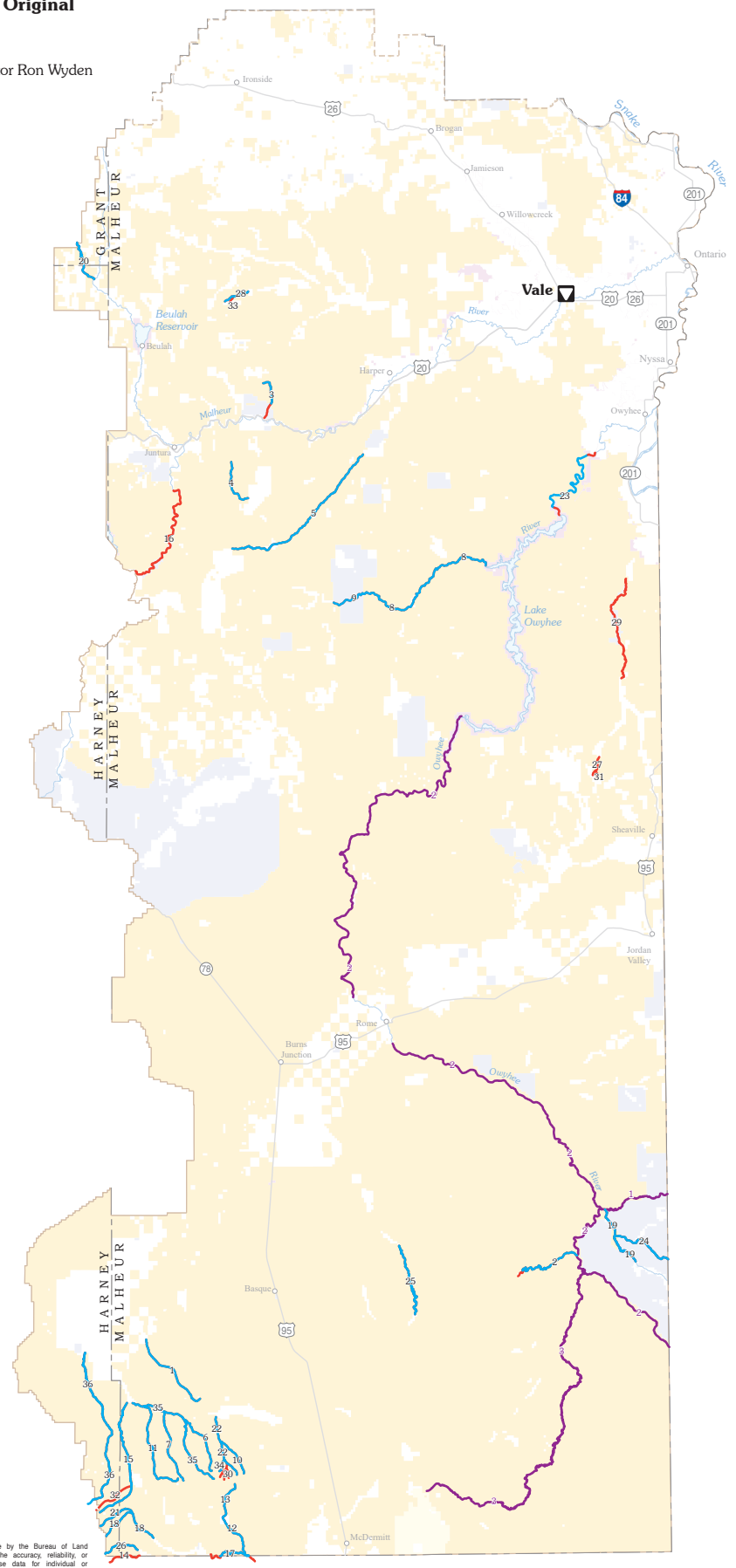
River Democracy Act - S.192
Proposed Wild & Scenic Rivers
Proposed and Removed from Original

VALE DISTRICT
 Malheur Field Office

This map was prepared at the request of Senator Ron Wyden
 December 1, 2022

LEGEND

-  Proposed Wild and Scenic River
-  Removed from Original Proposal Wild & Scenic River
-  Designated Wild & Scenic River
-  BLM Office
-  Interstate
-  US Highway
-  State Highway
-  State Boundary
-  County Boundary
-  BLM District Boundary
-  BLM Field Office Boundary
- Administered Lands**
-  Bureau of Land Management
-  US Fish & Wildlife Service
-  Other Federal Agency
-  Tribal Lands
-  State of Oregon
-  Private or Other



No warranty is made by the Bureau of Land Management as to the accuracy, reliability, or completeness of these data for individual or aggregate use with other data. Original data were compiled from various sources. This information may not meet National Map Accuracy Standards. This product was developed through digital means and may be updated without notification.

Existing Wild and Scenic River

Map Number	Wild and Scenic River Name
1	North Fork Owyhee Wild and Scenic River
2	Owyhee Wild and Scenic River
3	West Little Owyhee Wild and Scenic River

Proposed Wild and Scenic River Revised and Removed From Original Proposal

Map Number	Wild and Scenic River Name
1	Antelope Creek
2	Big Antelope Creek
3	Black Canyon Creek
4	Canyon Creek
5	Cottonwood Creek
6	Cottonwood Creek
7	Doolittle Creek
8	Dry Creek, Lower
9	Dry Creek, Upper
10	East Fork Oregon Canyon Creek
11	Fifteenmile Creek
12	Indian Creek, Lower
13	Indian Creek, Upper
14	Line Canyon Creek
15	Little Whitehorse Creek
16	Malheur River, Lower
17	McDermitt Creek
18	McDermitt Creek, Upper
19	Middle Fork Owyhee River
20	North Fork Malheur River - mainstem
21	North Fork McDermitt Creek
22	Oregon Canyon Creek
23	Owyhee River
24	Pole Creek
25	Rattlesnake Creek
26	Sage Creek
27	South Fork Carter Creek
28	South Fork Indian Creek
29	Succor Creek
30	Tributary Oregon Canyon Creek
31	Unnamed Trib to South Fork Carter Creek
32	Unnamed Tributary Little Whitehorse
33	Unnamed Tributary South Fork Indian Creek
34	West Fork Oregon Canyon Creek
35	Whitehorse Creek
36	Willow Creek