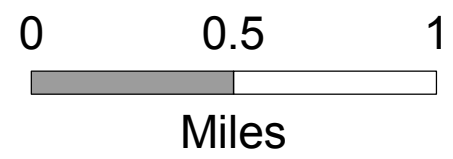


Mount Hood Wilderness - Tilly Jane

Prepared at the request of U. S. Senator Wyden - July 20, 2007

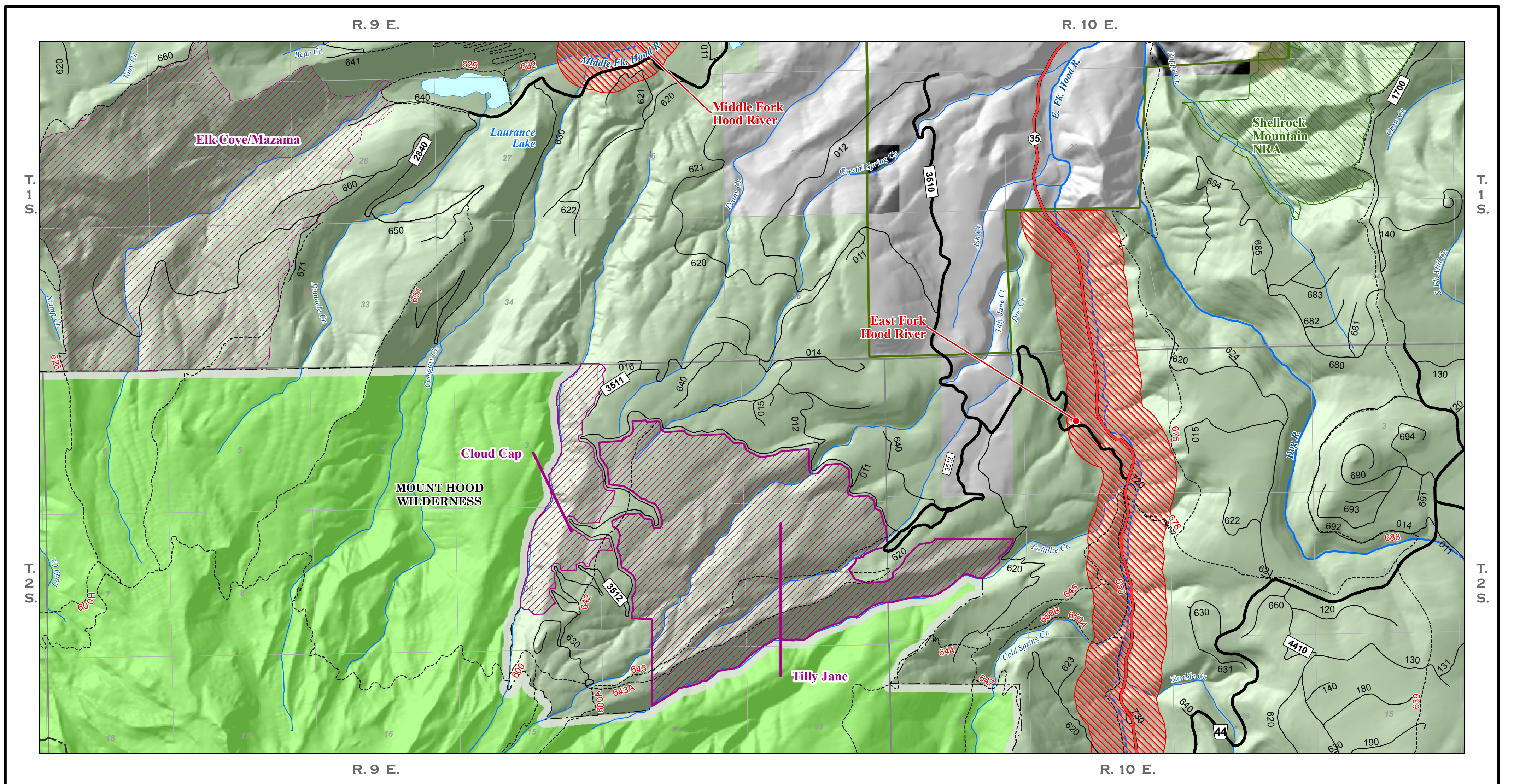
- | | | |
|------------------|-----------------------------------|------------------------|
| Tilly Jane | Existing US Forest Service | Base Data |
| Wilderness Areas | Wilderness | Highways ³⁵ |
| | Lakes | |
| | River | |
| | Creeks | |
| | Trails Trails: 643A | |
| | FS Paved Roads | |
| | FS Other Roads | |



OREGON

The reliability or suitability of this information for a particular purpose cannot be guaranteed. The data and product accuracy may vary due to compilation from various sources, including modeling and interpretation, and may not meet National Map Accuracy Standards. This information may be updated, corrected, or otherwise modified without notification.

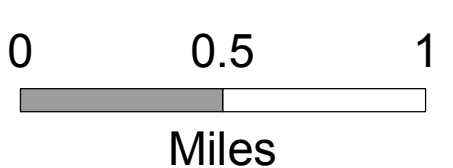
Locals: 023 Collectors: Arterials:



Mount Hood Wilderness - Tilly Jane

Prepared at the request of U. S. Senator Wyden - July 20, 2007

- | | | |
|---------------------------|-----------------------------------|------------------------|
| Tilly Jane | Existing US Forest Service | Base Data |
| Wilderness Areas | Mt. Hood NF | Private Land |
| National Recreation Areas | Wilderness | BLM Lands |
| Wild and Scenic Rivers | Lakes | Highways ³⁵ |
| | River | |
| | Creeks | |
| | Wild and Scenic Rivers | |
| | Trails Trails: 643A | |
| | FS Paved Roads | |
| | FS Other Roads | |



OREGON

The reliability or suitability of this information for a particular purpose cannot be guaranteed. The data and product accuracy may vary due to compilation from various sources, including modeling and interpretation, and may not meet National Map Accuracy Standards. This information may be updated, corrected, or otherwise modified without notification.

Locals: 023 Collectors: Arterials: